



MAIN FLOOR
3,906 SQ. FT.

350 SPARTON ROAD

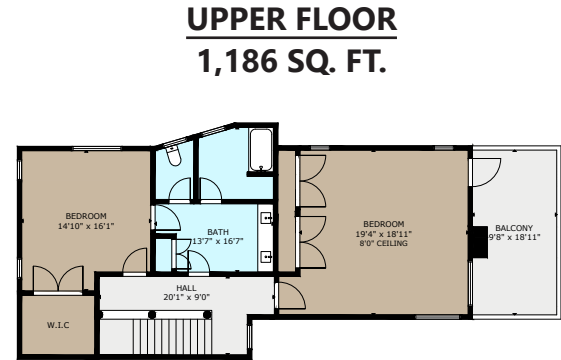
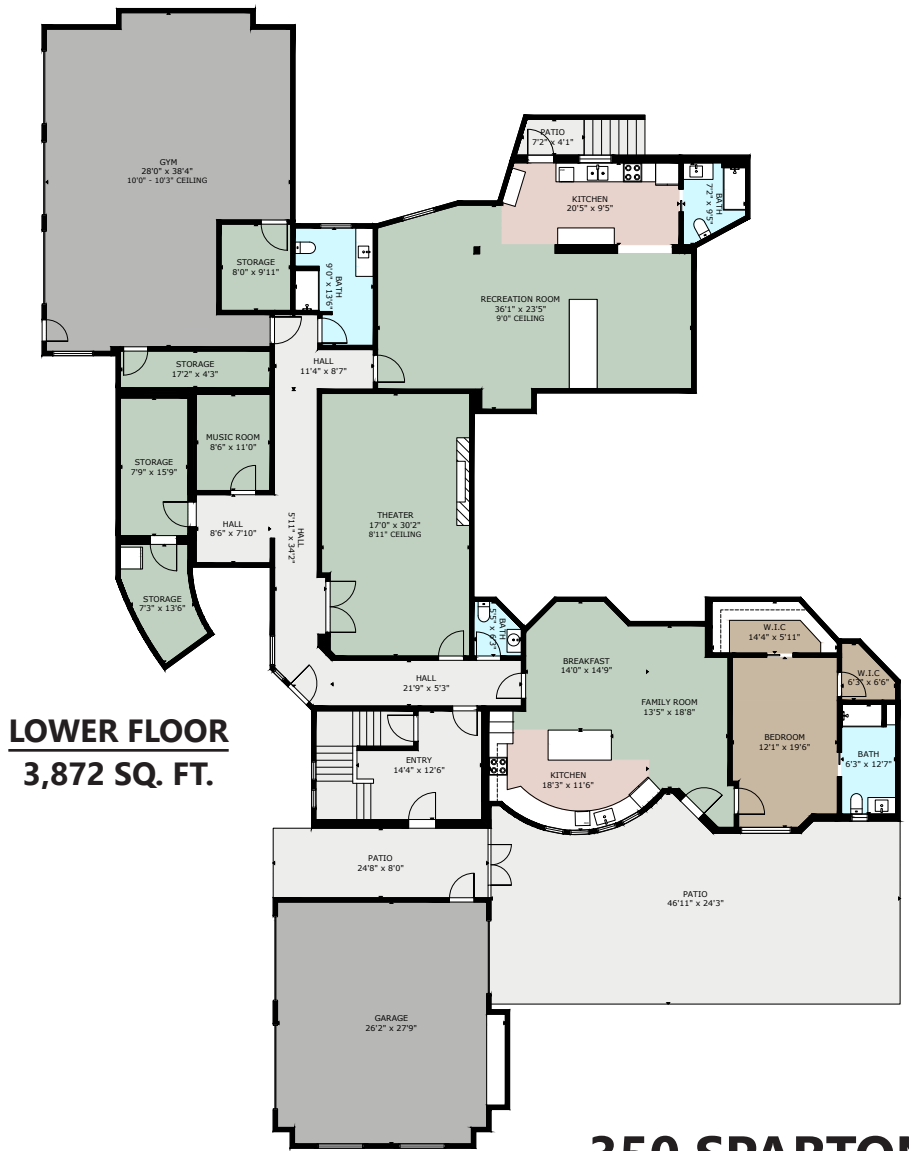
	FINISHED	GYM	GARAGE	DECK / PATIO	POOL/PATIO	PORCH	BALCONY
MAIN	3906	-	-	3339	2046	176	-
UPPER	1186	-	-	-	-	-	183
LOWER	3872	1125	681	1171	-	-	-
TOTAL	9034	1125	681	4510	2046	176	183

SIZE AND DIMENSIONS ARE APPROXIMATE, ACTUAL MAY VARY
PREPARED FOR THE EXCLUSIVE USE OF

VICTORIA REAL ESTATE TEAM

MEASURED ON 06/29/23, BY STELLAR REAL ESTATE MARKETING
www.stellarca.ca | + (250) 929 1888 | info@stellarca.ca





350 SPARTON ROAD

	FINISHED	GYM	GARAGE	DECK / PATIO	POOL/PATIO	PORCH	BALCONY
MAIN	3906	-	-	3339	2046	176	-
UPPER	1186	-	-	-	-	-	183
LOWER	3872	1125	681	1171	-	-	-
TOTAL	9034	1125	681	4510	2046	176	183

SIZE AND DIMENSIONS ARE APPROXIMATE, ACTUAL MAY VARY
 PREPARED FOR THE EXCLUSIVE USE OF

VICTORIA REAL ESTATE TEAM

MEASURED ON 06/29/23, BY STELLAR REAL ESTATE MARKETING
www.stellarca.ca | + (250) 929 1888 | info@stellarca.ca



MAIN FLOOR
1,571 SQ. FT.



350 SPARTON ROAD - GUEST HOUSE

	FINISHED	UNFINISHED	DECK/PATIO
MAIN	1571	-	700
TOTAL	1571	-	700

SIZE AND DIMENSIONS ARE APPROXIMATE, ACTUAL MAY VARY
PREPARED FOR THE EXCLUSIVE USE OF

VICTORIA REAL ESTATE TEAM

MEASURED ON 06/23/23, BY STELLAR REAL ESTATE MARKETING
www.stellarca.ca | + (250) 929 1888 | info@stellarca.ca

